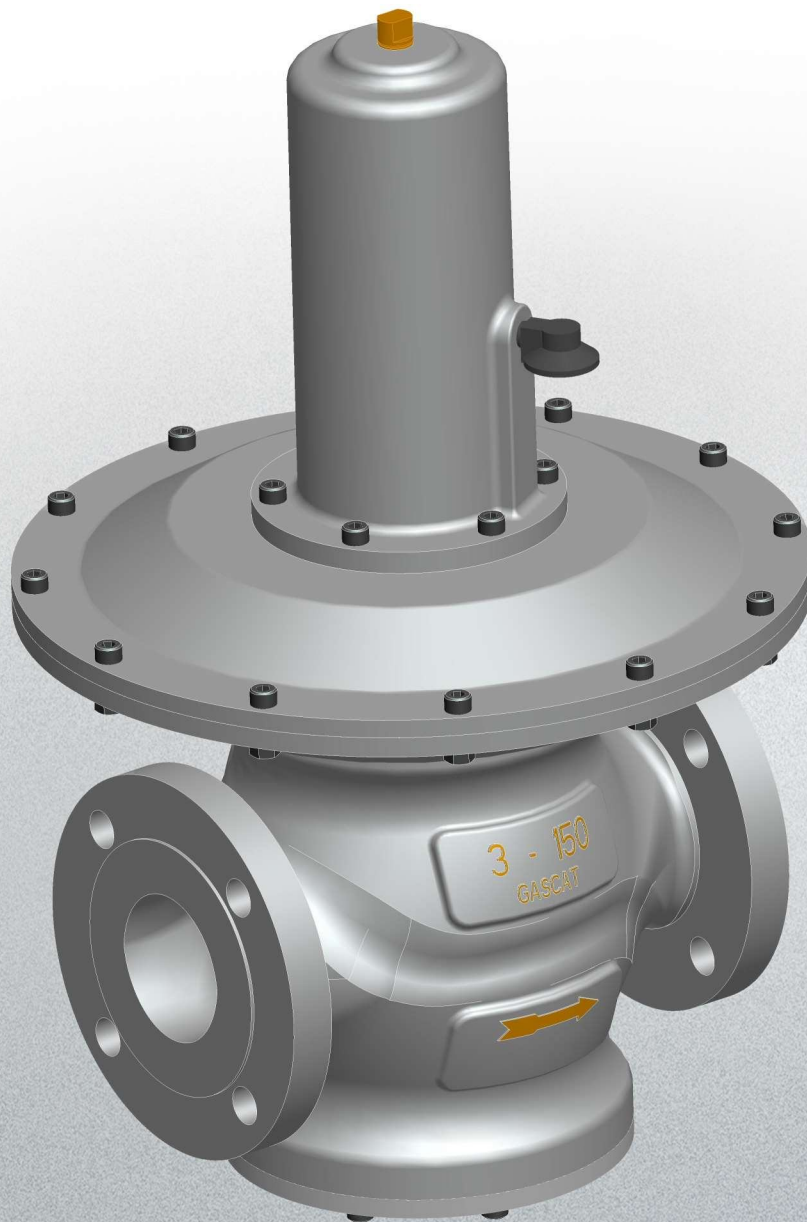


GOVERNOR 254

Pressure Regulator Valve



GASCAT

INTRODUCTION

The GOVERNOR 254 was developed by GASCAT for applications with low inlet pressure (up to 2 bar) in combination with low outlet pressures (10 to 320 mbar), high sensitive and fast response

Many application on natural gas networks distribution, LGP and all non corrosive gaseous.

FEATURES

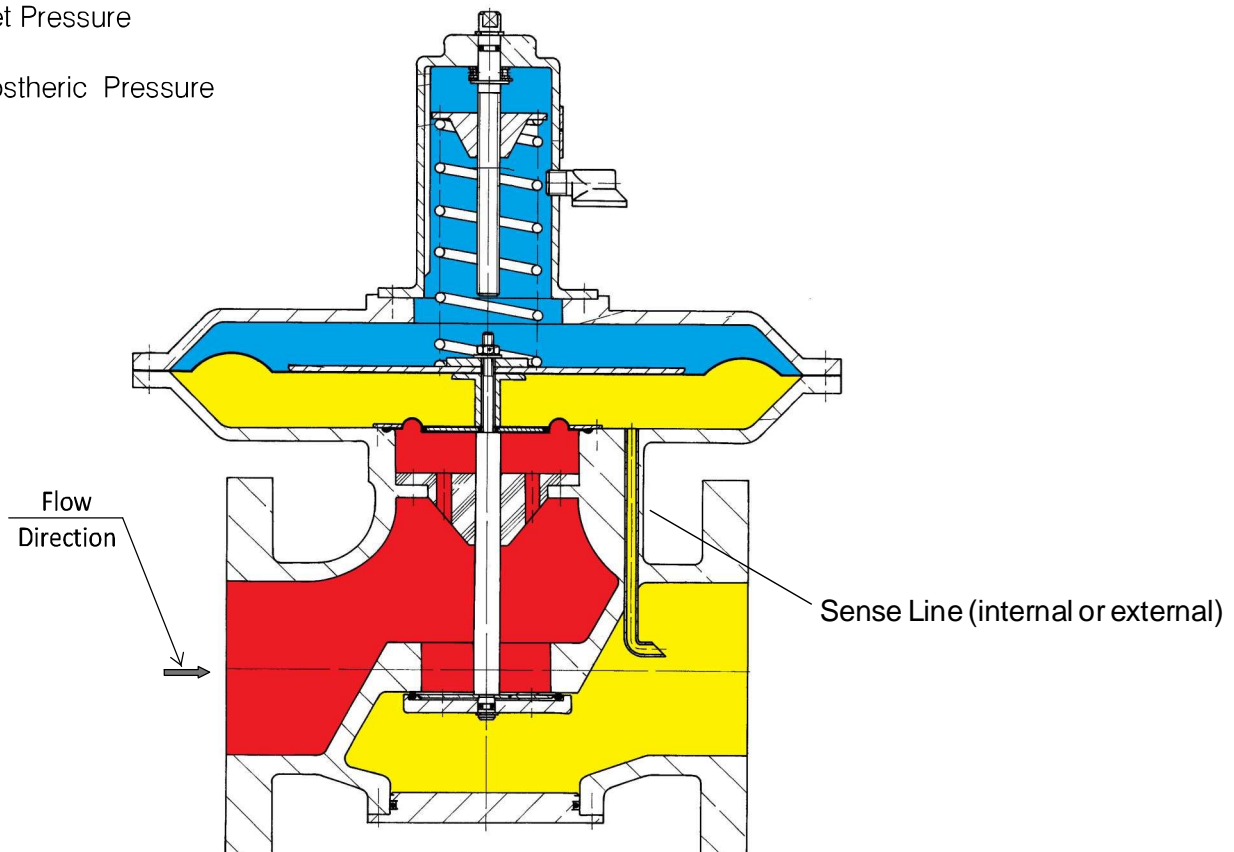
- Quick response
- Installation at any angle
- Wide operational pressure range

WORKING PRINCIPLE

The GOVERNOR 254 working principle is based on the forces in equilibrium. The pressure to be controlled (outlet pressure) is transmitted by an sensing line installed downstream and acts under the diaphragm, where the under force will be in equilibrium with the spring force that acts over diaphragm.

Starting the gas consumption the pressure downstream will decrease as soon as in the sensing line and under the diaphragm. The spring force will move downward the obturator assembly allowing the gas passage through the valve body. In case of gas consumption stopping the valve will close.

- Inlet Pressure
- Outlet Pressure
- Atmospheric Pressure



TECHNICAL CHARACTERISTICS

COMPONENT	MATERIAL
Body	Aluminium / Ductile Iron GGG40 (Optional)
Bottom Cover	Aluminium
Top Cover	Aluminium
Internals	Aluminium
Elastomers	Aluminium / BUNA-N (STD) Aluminium / FKM (Optional)

Note: For other material option, consult our Sales Department.

OPERATION LIMITS	
Maximum Inlet Pressure	2 bar
Outlet Pressure Range	10 mbar ~ 320 mbar
Temperature Range	-20°C ~ +60°C (*)
AC - Accuracy Class	Up to 10%
SG - Lock Up	Up to 5%

Note: GASCAT should be consulted for temperatures different than mentioned above.

CONNECTION	ND	CLASS
Flange ANSI B16.5	2", 3", 4", 6" & 8"	125# RF / FF 150#RF / FF PN16RF / FF

SPRING RANGE	SPRING COLOR
10 - 25 mbar	Yellow
20 - 45 mbar	Red
40 - 65 mbar	Blue
60 - 85 mbar	Green
80 - 120 mbar	Orange
110 - 220 mbar	Brown
210 - 320 mbar	Gray

PERFORMANCE CAPACITY

(m³/h - natural gas; Droop pressure 10%)

Nominal Diameter 2"											
Inlet Pressure (mbar)	Outlet Pressure (mbar)										
	12.5	20	30	45	50	60	70	100	150	200	350
25	80	56	-	-	-	-	-	-	-	-	-
50	128	126	126	80	-	-	-	-	-	-	-
75	260	160	178	97	114	126	97	-	-	-	-
100	310	218	210	178	178	192	170	-	-	-	-
150	350	260	355	226	226	283	270	270	-	-	-
200	450	375	440	380	380	400	425	425	425	-	-
350	485	385	625	580	600	620	630	630	630	630	-
400	575	460	800	720	685	720	800	800	800	800	800
500	650	520	875	785	745	780	875	875	875	875	875
600	750	600	1000	900	855	900	1000	1000	1000	1000	1000
700	850	680	1025	925	875	875	1025	1025	1025	1025	1025
800	950	760	1150	1035	985	985	1150	1150	1150	1150	1150
1000	1050	840	1275	1145	1085	1085	1275	1275	1275	1275	1275
1200	1175	940	1400	1260	1195	1195	1400	1400	1400	1400	1400
1400	1250	1000	1525	1370	1300	1300	1525	1525	1525	1525	1525
1600	1440	1152	1650	1485	1410	1410	1650	1650	1650	1650	1650
1800	1550	1240	1800	1620	1540	1540	1800	1800	1800	1800	1800
2000	1690	1352	1940	1745	1660	1660	1940	1940	1940	1940	1940

Nominal Diameter 3"											
Inlet Pressure (mbar)	Outlet Pressure (mbar)										
	12.5	20	30	45	50	60	70	100	150	200	350
25	260	130	-	-	-	-	-	-	-	-	-
50	260	300	260	252	-	-	-	-	-	-	-
75	350	465	650	433	380	295	235	-	-	-	-
100	435	610	730	550	550	570	470	-	-	-	-
150	520	720	670	750	750	710	660	550	-	-	-
200	650	750	830	950	950	800	955	750	550	-	-
350	750	830	1040	1200	1200	900	1000	1200	1000	1300	-
400	830	1500	1280	1350	1350	1150	1200	1350	1200	1280	1380
500	980	1600	1350	1480	1480	1200	1300	1480	1580	1650	1750
600	1250	1920	1500	1700	1700	1500	1650	1720	1800	1880	1980
700	1530	2130	1880	2050	2080	1880	1900	2000	2150	2250	2350
800	1850	2400	2150	2300	2360	2150	2250	2350	2410	2600	2700
1000	2100	2750	2300	2580	2600	1420	2590	2630	2730	2950	3050
1200	2430	3000	2680	2800	2810	1680	2830	2910	3150	3200	3300
1400	2700	3280	2950	3100	3050	1990	3000	3200	3460	3590	3690
1600	3050	3560	3200	3390	3400	2200	3290	3510	3710	3900	4000
1800	3300	3820	3550	3600	3550	4560	3580	3860	4050	4230	4330
2000	3610	4150	3880	3880	3800	4820	3850	4000	4400	4550	4650

PERFORMANCE CAPACITY

(m³/h - natural gas; Droop pressure 10%)

Nominal Diameter 4"											
Inlet Pressure (mbar)	Outlet Pressure (mbar)										
	12.5	20	30	45	50	60	70	100	150	200	350
25	390	435	-	-	-	-	-	-	-	-	-
50	390	580	610	440	-	-	-	-	-	-	-
75	500	700	760	730	720	640	600	-	-	-	-
100	650	790	930	950	950	860	850	-	-	-	-
150	780	940	1100	1200	1200	1050	1100	1050	-	-	-
200	960	1050	1250	1400	1400	1200	1350	1150	1250	1400	-
350	1000	1250	1450	1750	1800	1350	1450	1750	1800	1980	-
400	1150	1400	1600	1900	2100	1520	1600	1090	2000	2070	2170
500	1300	1500	1750	2120	1290	1600	1780	1300	2200	2290	2390
600	1500	1700	2000	2350	1500	1780	2000	1500	2500	2480	2580
700	1700	1900	2050	2500	1300	1500	2190	1700	2750	2670	2770
800	1900	2100	2300	2700	1550	1710	2350	2000	2980	2980	3080
1000	2100	2300	2550	2980	1980	1950	2500	2580	3150	3200	3300
1200	2350	2550	2800	3300	2290	2290	2700	2850	3380	3500	3600
1400	2500	2900	3050	3550	2500	2550	3000	3100	3600	3750	3850
1600	2880	3250	3300	3800	2800	2880	3380	3450	3880	4000	4100
1800	3100	3580	3600	4010	3080	3100	3600	3680	4000	4350	4450
2000	3380	3800	3880	4450	3350	3480	3880	3950	4350	4550	4650

Nominal Diameter 6"											
Inlet Pressure (mbar)	Outlet Pressure (mbar)										
	12.5	20	30	45	50	60	70	100	150	200	350
25	780	780	-	-	-	-	-	-	-	-	-
50	780	1160	1220	870	-	-	-	-	-	-	-
75	1000	1400	1520	1440	1440	1280	1200	-	-	-	-
100	1300	1580	1850	1900	1900	1700	1700	-	-	-	-
150	1560	1830	2140	2350	2350	2070	2060	2040	-	-	-
200	1920	2050	2430	2700	2680	2270	2640	2280	2450	-	-
350	2000	2470	2850	3500	3600	2650	2850	3500	3600	3890	-
400	2280	2680	3000	3780	3900	2980	3050	3810	3890	3950	4050
500	2500	2950	3290	3010	4200	3190	3380	4050	4100	4280	4380
600	2900	3290	3550	3500	4600	3400	3650	4580	4480	4600	4700
700	3250	3550	3800	3780	4950	3710	3980	4850	4800	4950	5050
800	3590	3800	4100	4000	4200	4000	4230	5100	5100	5350	5450
1000	3800	4100	4380	4250	4480	4300	4560	5420	5380	5560	5660
1200	4050	4440	4610	4580	4800	4580	4700	5820	5750	5800	5900
1400	4300	4780	4950	4810	5050	4880	5050	5100	6010	6100	6200
1600	4650	5000	5210	5120	5380	5050	5310	5420	6360	6410	6510
1800	4900	5280	5550	5400	5610	5300	5650	5700	6600	6700	6800
2000	5150	5550	5800	5760	5950	5680	5900	6010	6950	7050	7150

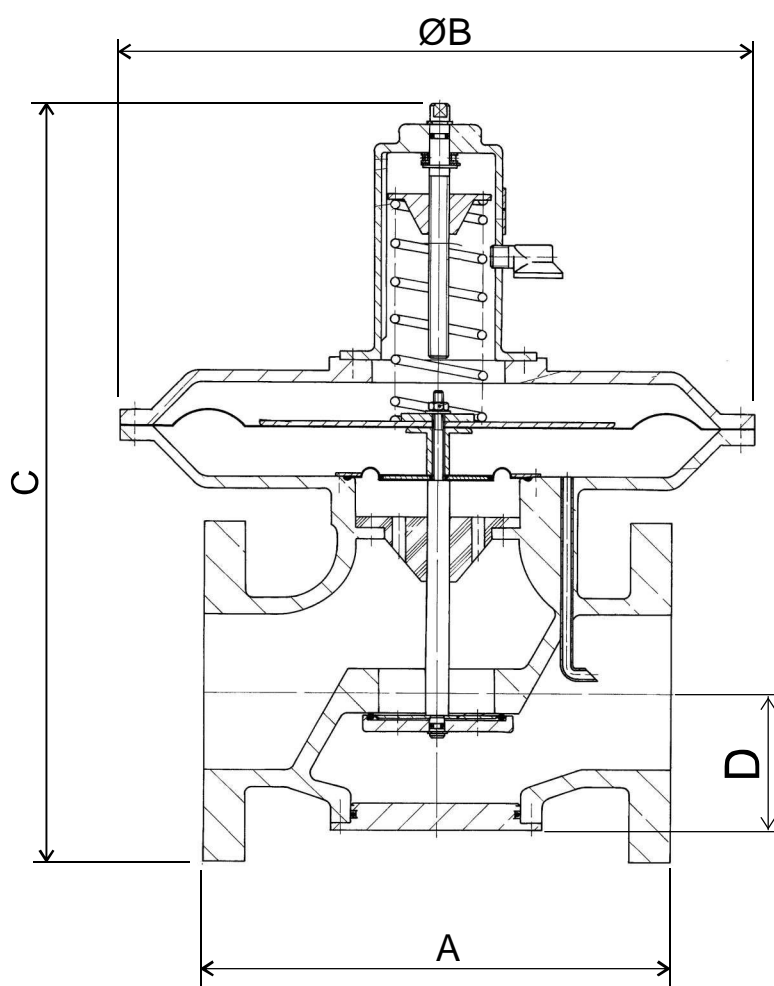
PERFORMANCE CAPACITY

(m³/h - natural gas; Droop pressure 10%)

Nominal Diameter 8"												
Inlet Pressure (mbar)	Outlet Pressure (mbar)											
	12.5	20	30	45	50	60	70	100	150	200	350	
25	1560	1560	-	-	-	-	-	-	-	-	-	-
50	1560	2320	2320	1740	-	-	-	-	-	-	-	-
75	2000	2800	3040	2880	2880	2400	2400	-	-	-	-	-
100	2600	3160	3700	3800	3800	3400	3400	-	-	-	-	-
150	3120	3660	4280	4700	4700	4140	4120	4080	-	-	-	-
200	3840	4100	4860	5400	5360	4540	5280	4560	4700	-	-	-
350	4000	4940	5700	7000	7200	5300	5700	7000	7200	7500	-	-
400	4350	5250	6080	7350	7580	5610	6010	7350	7500	7850	7950	-
500	4600	5580	6310	7680	7800	5950	6380	7610	7810	8090	8190	-
600	4980	5800	6650	7950	8110	6280	6650	7900	8100	8350	8450	-
700	5250	6140	6900	7280	8450	6500	6980	8110	8480	8600	8700	-
800	5550	6480	7250	7500	8500	6850	7240	8430	8760	8920	9020	-
1000	5810	6730	7500	7850	8800	7100	7530	8700	9050	9250	9350	-
1200	6130	7000	7830	8120	9100	7430	7820	9040	9300	9580	9680	-
1400	6400	7350	8100	8450	9280	7700	8100	9310	9580	9830	9930	-
1600	6780	7620	8430	8420	9530	8020	8460	9640	9820	10100	10200	-
1800	7030	7400	8730	8700	9820	8310	8730	9980	10000	10430	10530	-
2000	7310	7750	9020	9050	10050	8600	9000	10180	10200	10800	10900	-

DIMENSIONS AND WEIGHTS

DIMENSIONS (mm)					WEIGHTS (kg)
ND	A	ØB	C	D	
2"	254	381	486	110	13
3"	298	381	486	150	15
4"	352	451	754	180	64
6"	451	559	1024	230	115
8"	543	662	1388	280	210



Gascat Indústria e Comércio Ltda.

Rodovia SP 73, nº 1141 - Distrito Industrial
 Indaiatuba - SP - Brasil - CEP 13.347-390
 Phone.: (55 19) 3936-9300
 sales@gascat.com.br



www.gascat.com.br